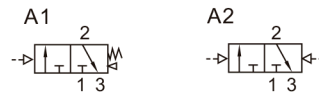


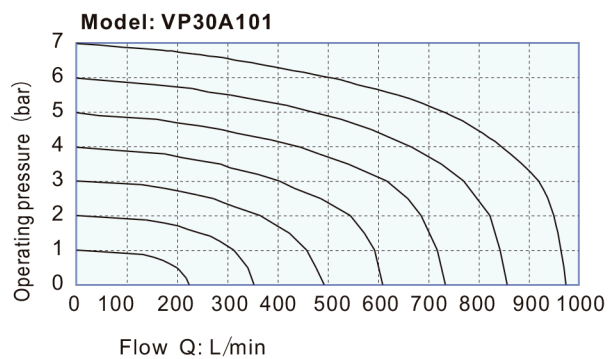
### Symbol



### Product feature

1. Structure in sliding column mode: good tightness and sensitive reaction.
2. Double air control valves have memory function.
3. Internal hole adopts special processing technology which has little attrition friction, low start pressure and long service life.
4. No need to add oil for lubrication.
5. Multi-mounting helps to install and apply.
6. Integrate with the manifold to save installation space.

### Flow chart



### Ordering code

VP 3 0 A 1 01

① ② ③ ④ ⑤ ⑥

①	<b>Model</b> VP: Pilot valve	⑤	<b>Acting</b> 1: Single-acting 2: Double-acting
②	<b>Valve Type</b> 3: 3/2 Way	⑥	<b>Port Size</b> 01: 1/8" G
③	<b>Series Code</b> 0: 0 Serie		
④	<b>Directional control</b> A: 2 Positions		

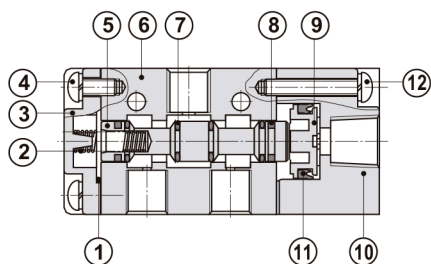
Note: Please refer to page 36 for manifold specification and the order way.

### Specification

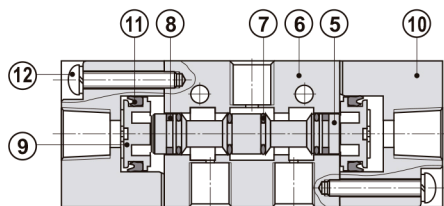
Valve	VP30A101	VP30A201
Fluid	Air(to be filtered by 40μm filter element)	
Acting	External pilot	
Port size	1/8"G	
Valve type	3 port 2 position	
Lubrication	Not required	
Operating pressure	1.5~8bar(21~114psi)	
Proof pressure	15bar(215psi)	
Temperature °C	-20~70	
Orifice size	12.0mm <sup>2</sup> (Cv=0.67)	
Material of body	Aluminum alloy	

### Inner structure

#### VP30A1



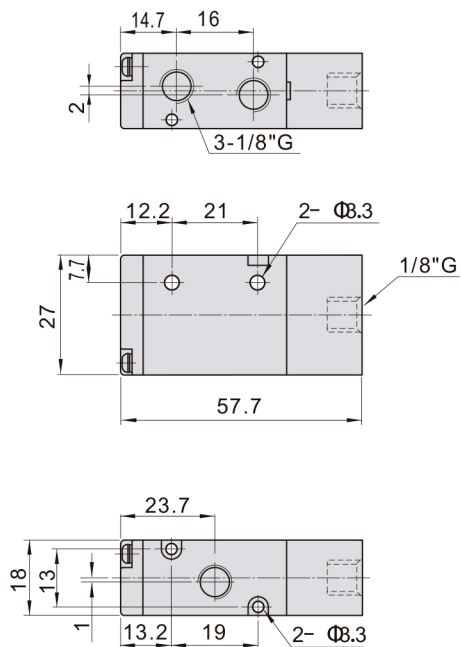
#### VP30A2



No.	Item
(1)	Bottom cover gasket
(2)	Spring
(3)	Bottom cover
(4)	Bottom cover screw
(5)	Spool
(6)	Body
(7)	O-ring
(8)	Wear ring
(9)	Piston
(10)	Pilot body
(11)	Piston O-ring
(12)	Piston screw

### Dimensions

#### VP30A1



#### VP30A2

